

Instructions for setting up your own outgoing email software on Windows



shanghaiguide.com

Author: Lawrence Sheed
Date: Monday, November 12, 2001
Version: 1.1 (added anti spam details)

Shanghai Telecom's ADSL connection doesn't come complete with an outgoing email server.

My preferred method is to install an SMTP server (Outgoing Mail Server) onto the computer. This computer can service one machine, or the entire network.

Windows 2000 comes complete with its own Mail Software, however it is generally safer to use the Argosoft server due to the number of security exploits possible with Microsoft's version.

Step 1. Download Argosoft's mail software application:

Argosoft has a number of different versions, the free one is the one I'll go through below. If you like it, think about purchasing the full version.

Argosofts Mail download page is here

<http://www.argosoft.com/applications/mailserver/download.asp>

The current link to the download file

<http://www.argosoft.com/files/apps1/agsmail.exe>

Step 2. Installation

Double click on the file you downloaded from the link above.

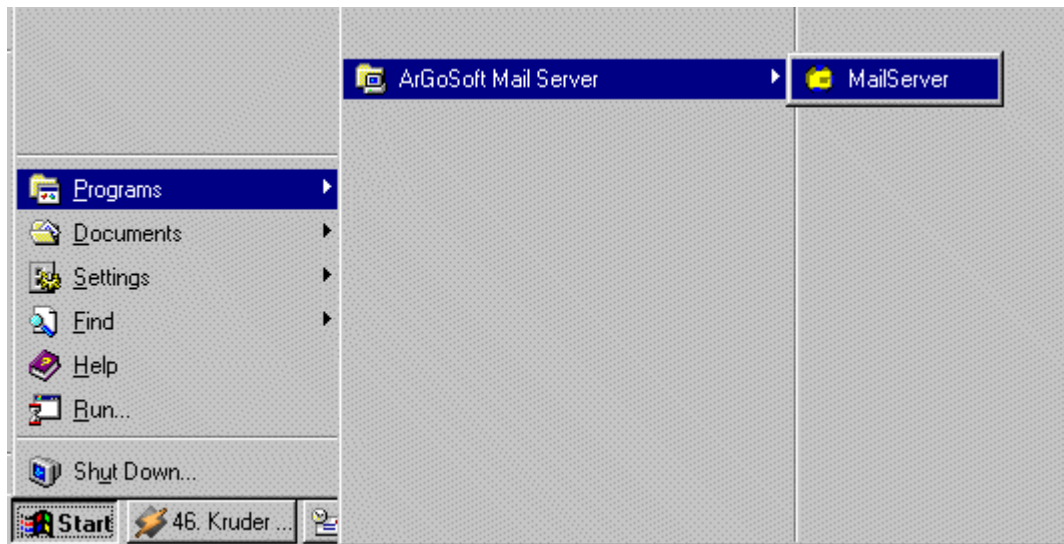


Install as normal, the program installation defaults are fine.



Step 3. Configuration

The Mail Server software should be in your program folder.
Open the software from its install location (should be similar to below)

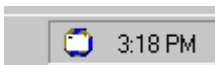


The first time you use the software, it will pop up an error message about relaying.

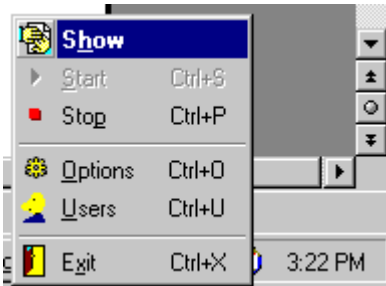


Ignore it. (Click OK)

You should now see a blue and white circular icon in your toolbar



Right click on the icon, and click Show (or Options)



The Mail Server main window will appear. Click Tools, Options to popup the Options Dialog if you didn't click Options in the above step.

The options dialog box will now be displayed (see below for example)



Change your default settings to the settings in the image above.

Brief Description

DNS Server:

In this instance we will be using Uninet's DNS Server, mainly because the Shanghai Telecom DNS servers are too overloaded most of the time. If you have problems with DNS lookups using 202.96.197.1, try using 202.96.199.133

Load Server at Windows Startup:

Loads the Mail Server when you load windows.

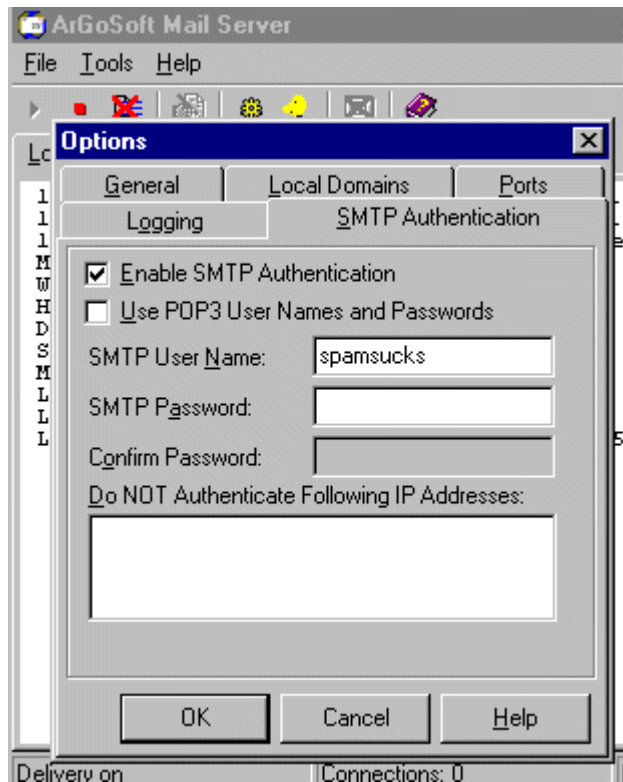
Allow Relay:

Allows you to use the Mail server to send to other mail servers. This should be checked if you want to be able to send mail out.



Optional (Anti Spam prevention)

Once you've changed the General tab as above, click on the SMTP Authentication.



Check the Enable SMTP Authentication box.
You'll need to type in an SMTP user name and password.

I'll leave it up to you to decide a password and user name.
This username is NOT your email user name. It is a random name you decide to use.

I highly recommend that you do NOT use your POP account username.

Brief Description

SMTP Authentication:

This allows you to add a login feature to your mail server. Unless somebody knows your SMTP server name and password, they cannot use your server to send mail. This stops spammers from using your server to send outgoing mail.



Click Ok.

Click the Green play button or press Ctrl S to start the mail server.



Your SMTP software is now installed.

Step 4. Mail Software Configuration

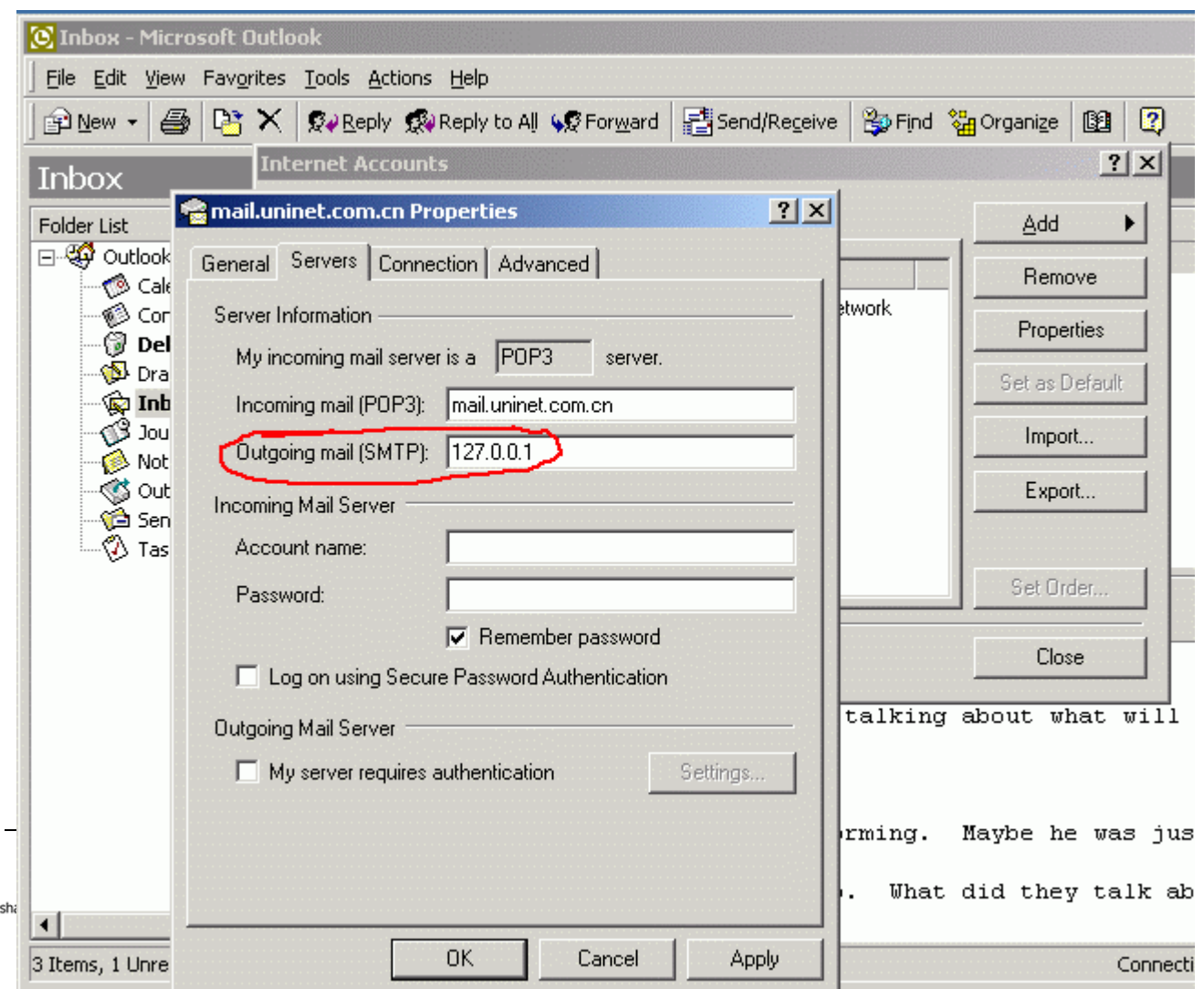
Your Email software now needs to be setup to use the Argosoft Mail Software.

Set your Outgoing Mail Server (or SMTP server) to 127.0.0.1

Setting for individual programs are beyond the realm of this document, but most mail software allows you to change settings under Tools, Options, or Tools, Settings or Tools, Accounts

Example setting for Outlook 2000

(Tools, Accounts, Mail, Properties)



If you've enabled SMTP anti spam Authentication on your server, you'll also need to check the My Server requires authentication box, and enter your user name and password in the Settings dialog.

Step 5. Testing

Now that the SMTP software and hopefully your Email software has been setup, you should send a few test mails to yourself, and other people to make sure your configuration is correct.

If everything works fine, you should see the Mail software icon in the toolbar turn yellow once you've sent a mail. Once the outgoing mail has been sent from the SMTP software, the icon will turn white again.

--ooOoo--

If you've found this document useful, feel free to let me know.
Contact details are below

Lawrence Sheed

Tel: +86 13901 802 269

Fax: +86 (21) 6294 7500



shanghaiguide.com

<http://www.shanghaiguide.com>

